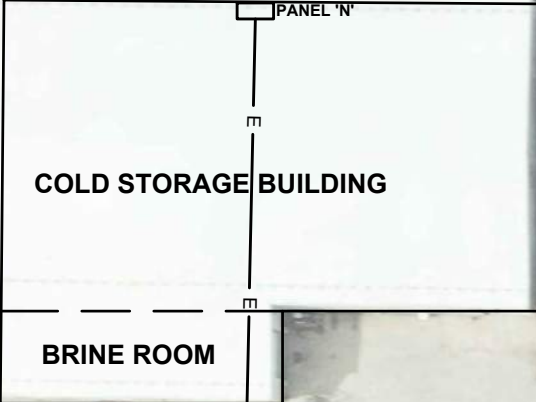


**CONTRACT 8605
ADDENDUM 1**

1. install (2) salvaged PTZ cameras under NW roof overhang.
2. Orientate cameras as noted by blue arrows.
3. See sheet 7 for conduit and cable information



UTILITY TRENCH PATCH FOR ELECTRICAL CONDUITS UP ON OUTSIDE OF BUILDING TO ABOVE FOUNDATION WALL, THRU METAL BUILDING WALL TO INSIDE. CAP 3" SCH 80 PVC FOR FUTURE PV SOLAR. RUN 3" SCH. 80 PVC TO EXIST. PANEL 'N' FOR NEW SALT BARN POWER. REUSE AVAILABLE CIRCUITS. ALL CUTTING AND PATCHING BY CONTRACTOR SHALL BE WEATHER TIGHT AND NEAT IN APPEARANCE.

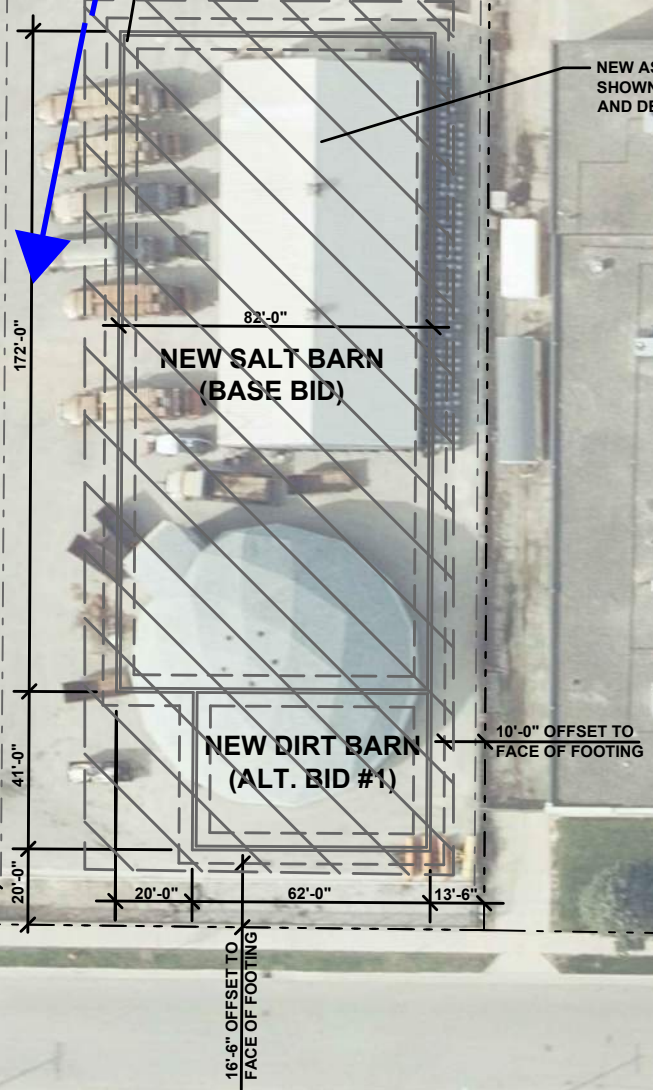
CENTER OF UTILITY TRENCH PATCH FOR ELECTRICAL. SEE SPECIAL PROVISIONS FOR REQUIREMENTS. ALL BENDS UNDER GROUND SHALL BE LARGE RADIUS BENDS. NO BURIED PULL BOXES WILL BE ALLOWED.

NEW ASPHALT PAVING AND CONCRETE PAVING SHOWN CROSSHATCHED. SEE CONCEPTUAL PLANS AND DETAILS FOR MORE INFORMATION.

**ENGINEERING DIVISION OPERATIONS
1600 EMIL ST.**

SET BACK AND BUILDING DIMENSIONS ARE BASED ON THE CONCEPTUAL STRUCTURE DESIGN ONLY. CONTRACTOR SHALL VERIFY FINAL BUILDING DESIGN AND PLACEMENT WITH THE CITY PROJECT MANAGER PRIOR TO STAKING BUILDING CORNERS AND STARTING EXCAVATION.

TRUCK SCALE



10'-0" OFFSET TO FACE OF FOOTING

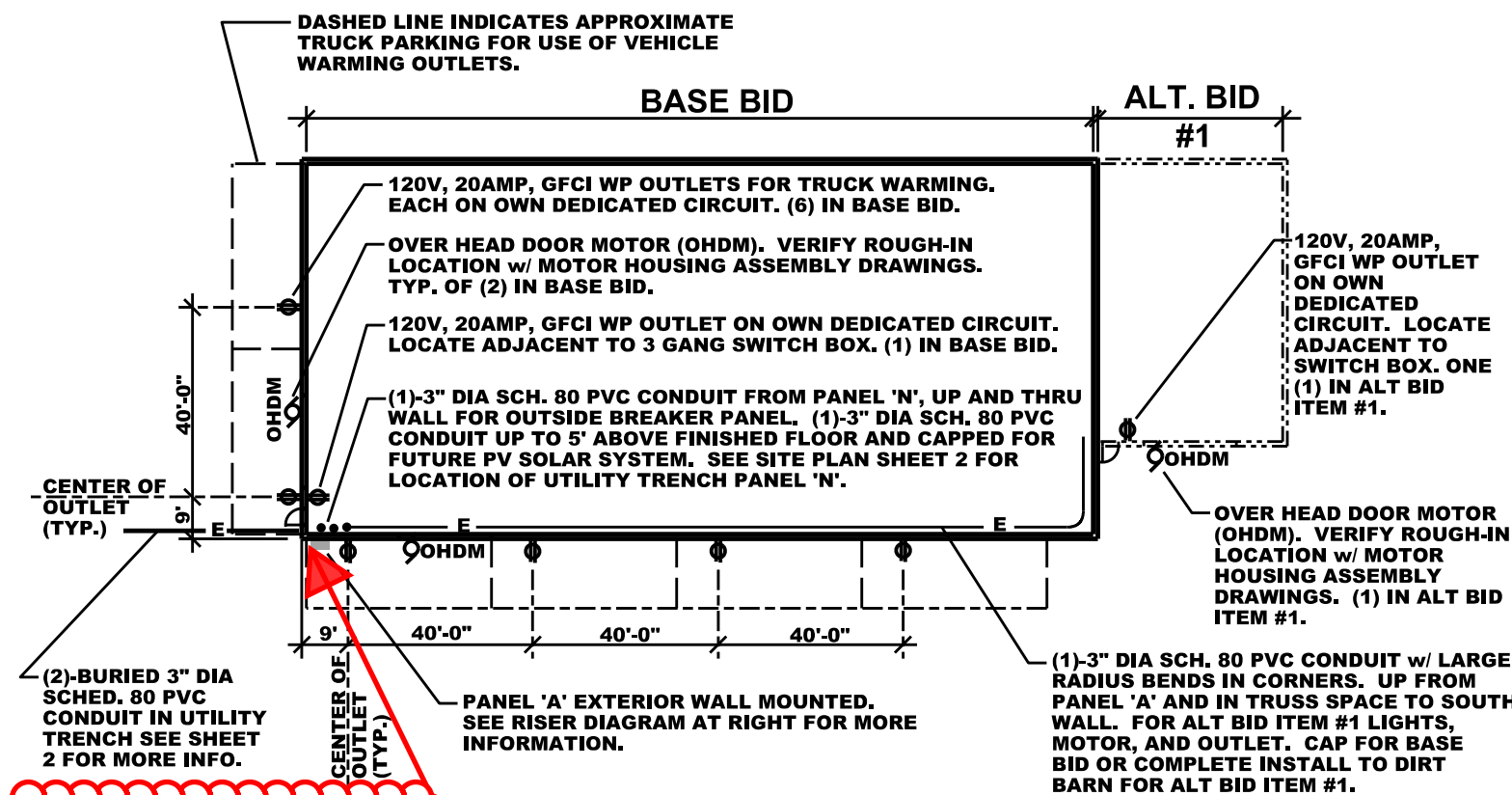
16'-6" OFFSET TO FACE OF FOOTING

EMIL ST.

4/17/2022	RSW	44001	8605	CONTRACT NO:	NEW BUILDING LOCATION AND SITE WORK PLAN	44001	4/17/2022	RSW	2
###	###	###	###	MADISON, WI	BADGER ROAD SALT BARN	44001	###	###	###
###	###	###	###	CONTRACT NO:	BADGER ROAD SALT BARN	44001	###	###	###
###	###	###	###	8605	BADGER ROAD SALT BARN	44001	###	###	###
###	###	###	###	44001	BADGER ROAD SALT BARN	44001	###	###	###
###	###	###	###	8605	BADGER ROAD SALT BARN	44001	###	###	###
###	###	###	###	44001	BADGER ROAD SALT BARN	44001	###	###	###
###	###	###	###	8605	BADGER ROAD SALT BARN	44001	###	###	###
###	###	###	###	44001	BADGER ROAD SALT BARN	44001	###	###	###
###	###	###	###	8605	BADGER ROAD SALT BARN	44001	###	###	###
###	###	###	###	44001	BADGER ROAD SALT BARN	44001	###	###	###
###	###	###	###	8605	BADGER ROAD SALT BARN	44001	###	###	###
###	###	###	###	44001	BADGER ROAD SALT BARN	44001	###	###	###
###	###	###	###	8605	BADGER ROAD SALT BARN	44001	###	###	###
###	###	###	###	44001	BADGER ROAD SALT BARN	44001	###	###	###
###	###	###	###	8605	BADGER ROAD SALT BARN	44001	###	###	###
###	###	###	###	44001	BADGER ROAD SALT BARN	44001	###	###	###
###	###	###	###	8605	BADGER ROAD SALT BARN	44001	###	###	###
###	###	###	###	44001	BADGER ROAD SALT BARN	44001	###	###	###
###	###	###	###	8605	BADGER ROAD SALT BARN	44001	###	###	###
###	###	###	###	44001	BADGER ROAD SALT BARN	44001	###	###	###
###	###	###	###	8605	BADGER ROAD SALT BARN	44001	###	###	###
###	###	###	###	44001	BADGER ROAD SALT BARN	44001	###	###	###
###	###	###	###	8605	BADGER ROAD SALT BARN	44001	###	###	###
###	###	###	###	44001	BADGER ROAD SALT BARN	44001	###	###	###
###	###	###	###	8605	BADGER ROAD SALT BARN	44001	###	###	###
###	###	###	###	44001	BADGER ROAD SALT BARN	44001	###	###	###
###	###	###	###	8605	BADGER ROAD SALT BARN	44001	###	###	###
###	###	###	###	44001	BADGER ROAD SALT BARN	44001	###	###	###
###	###	###	###	8605	BADGER ROAD SALT BARN	44001	###	###	###
###	###	###	###	44001	BADGER ROAD SALT BARN	44001	###	###	###
###	###	###	###	8605	BADGER ROAD SALT BARN	44001	###	###	###
###	###	###	###	44001	BADGER ROAD SALT BARN	44001	###	###	###
###	###	###	###	8605	BADGER ROAD SALT BARN	44001	###	###	###
###	###	###	###	44001	BADGER ROAD SALT BARN	44001	###	###	###
###	###	###	###	8605	BADGER ROAD SALT BARN	44001	###	###	###
###	###	###	###	44001	BADGER ROAD SALT BARN	44001	###	###	###
###	###	###	###	8605	BADGER ROAD SALT BARN	44001	###	###	###
###	###	###	###	44001	BADGER ROAD SALT BARN	44001	###	###	###
###	###	###	###	8605	BADGER ROAD SALT BARN	44001	###	###	###
###	###	###	###	44001	BADGER ROAD SALT BARN	44001	###	###	###
###	###	###	###	8605	BADGER ROAD SALT BARN	44001	###	###	###
###	###	###	###	44001	BADGER ROAD SALT BARN	44001	###	###	###
###	###	###	###	8605	BADGER ROAD SALT BARN	44001	###	###	###
###	###	###	###	44001	BADGER ROAD SALT BARN	44001	###	###	###
###	###	###	###	8605	BADGER ROAD SALT BARN	44001	###	###	###
###	###	###	###	44001	BADGER ROAD SALT BARN	44001	###	###	###
###	###	###	###	8605	BADGER ROAD SALT BARN	44001	###	###	###
###	###	###	###	44001	BADGER ROAD SALT BARN	44001	###	###	###
###	###	###	###	8605	BADGER ROAD SALT BARN	44001	###	###	###
###	###	###	###	44001	BADGER ROAD SALT BARN	44001	###	###	###
###	###	###	###	8605	BADGER ROAD SALT BARN	44001	###	###	###
###	###	###	###	44001	BADGER ROAD SALT BARN	44001	###	###	###
###	###	###	###	8605	BADGER ROAD SALT BARN	44001	###	###	###
###	###	###	###	44001	BADGER ROAD SALT BARN	44001	###	###	###
###	###	###	###	8605	BADGER ROAD SALT BARN	44001	###	###	###
###	###	###	###	44001	BADGER ROAD SALT BARN	44001	###	###	###
###	###	###	###	8605	BADGER ROAD SALT BARN	44001	###	###	###
###	###	###	###	44001	BADGER ROAD SALT BARN	44001	###	###	###
###	###	###	###	8605	BADGER ROAD SALT BARN	44001	###	###	###
###	###	###	###	44001	BADGER ROAD SALT BARN	44001	###	###	###
###	###	###	###	8605	BADGER ROAD SALT BARN	44001	###	###	###
###	###	###	###	44001	BADGER ROAD SALT BARN	44001	###	###	###
###	###	###	###	8605	BADGER ROAD SALT BARN	44001	###	###	###
###	###	###	###	44001	BADGER ROAD SALT BARN	44001	###	###	###
###	###	###	###	8605	BADGER ROAD SALT BARN	44001	###	###	###
###	###	###	###	44001	BADGER ROAD SALT BARN	44001	###	###	###
###	###	###	###	8605	BADGER ROAD SALT BARN	44001	###	###	###
###	###	###	###	44001	BADGER ROAD SALT BARN	44001	###	###	###
###	###	###	###	8605	BADGER ROAD SALT BARN	44001	###	###	###
###	###	###	###	44001	BADGER ROAD SALT BARN	44001	###	###	###
###	###	###	###	8605	BADGER ROAD SALT BARN	44001	###	###	###
###	###	###	###	44001	BADGER ROAD SALT BARN	44001	###	###	###
###	###	###	###	8605	BADGER ROAD SALT BARN	44001	###	###	###
###	###	###	###	44001	BADGER ROAD SALT BARN	44001	###	###	###
###	###	###	###	8605	BADGER ROAD SALT BARN	44001	###	###	###
###	###	###	###	44001	BADGER ROAD SALT BARN	44001	###	###	###
###	###	###	###	8605	BADGER ROAD SALT BARN	44001	###	###	###
###	###	###	###	44001	BADGER ROAD SALT BARN	44001	###	###	###
###	###	###	###	8605	BADGER ROAD SALT BARN	44001	###	###	###
###	###	###	###	44001	BADGER ROAD SALT BARN	44001	###	###	###
###	###	###	###	8605	BADGER ROAD SALT BARN	44001	###	###	###
###	###	###	###	44001	BADGER ROAD SALT BARN	44001	###	###	###
###	###	###	###	8605	BADGER ROAD SALT BARN	44001	###	###	###
###	###	###	###	44001	BADGER ROAD SALT BARN	44001	###	###	###
###	###	###	###	8605	BADGER ROAD SALT BARN	44001	###	###	###
###	###	###	###	44001	BADGER ROAD SALT BARN	44001	###	###	###
###	###	###	###	8605	BADGER ROAD SALT BARN	44001	###	###	###
###	###	###	###	44001	BADGER ROAD SALT BARN	44001	###	###	###
###	###	###	###	8605	BADGER ROAD SALT BARN	44001	###	###	###
###	###	###	###	44001	BADGER ROAD SALT BARN	44001	###	###	###
###	###	###	###	8605	BADGER ROAD SALT BARN	44001	###	###	###
###	###	###	###	44001	BADGER ROAD SALT BARN	44001	###	###	###
###	###	###	###	8605	BADGER ROAD SALT BARN	44001	###	###	###
###	###	###	###	44001	BADGER ROAD SALT BARN	44001	###	###	###
###	###	###	###	8605	BADGER ROAD SALT BARN	44001	###	###	###
###	###	###	###	44001	BADGER ROAD SALT BARN	44001	###	###	###
###	###	###	###	8605	BADGER ROAD SALT BARN	44001	###	###	###
###	###	###	###	44001	BADGER ROAD SALT BARN	44001	###	###	###
###	###	###	###	8605	BADGER ROAD SALT BARN	44001	###	###	###
###	###	###	###	44001	BADGER ROAD SALT BARN	44001	###	###	###
###	###	###	###	8605	BADGER ROAD SALT BARN	44001	###	###	###
###	###	###	###	44001	BADGER ROAD SALT BARN	44001	###	###	###
###	###	###	###	8605	BADGER ROAD SALT BARN	44001	###	###	###
###	###	###	###	44001	BADGER ROAD SALT BARN	44001	###	###	###
###	###	###	###	8605	BADGER ROAD SALT BARN	44001	###	###	###
###	###	###	###	44001	BADGER ROAD SALT BARN	44001	###	###	###
###	###	###	###	8605	BADGER ROAD SALT BARN	44001	###	###	###
###	###	###	###	44001	BADGER ROAD SALT BARN	44001	###	###	###
###	###	###	###	8605	BADGER ROAD SALT BARN	44001	###	###	###
###	###	###	###	44001	BADGER ROAD SALT BARN	44001	###	###	###
###	###	###	###	8605	BADGER ROAD SALT BARN	44001	###	###	###
###	###	###	###	44001	BADGER ROAD SALT BARN	44001	###	###	###
###	###	###	###	8605	BADGER ROAD SALT BARN	44001	###	###	###
###	###	###	###	44001	BADGER ROAD SALT BARN	44001	###	###	###
###	###	###	###	8605	BADGER ROAD SALT BARN	44001	###	###	###
###	###	###	###	44001	BADGER ROAD SALT BARN	44001	###	###	###
###	###	###	###	8605	BADGER ROAD SALT BARN	44001	###	###	###
###	###	###	###	44001	BADGER ROAD SALT BARN	44001	###	###	###
###	###	###	###	8605	BADGER ROAD SALT BARN	44001	###	###	###
###	###	###	###	44001	BADGER ROAD SALT BARN	44001	###	###	###
###	###	###	###	8605	BADGER ROAD SALT BARN	44001	###	###	###
###	###	###	###	44001	BADGER ROAD SALT BARN	44001	###	###	###
###	###	###	###	8605	BADGER ROAD SALT BARN	44001	###	###	###
###	###	###	###	44001	BADGER ROAD SALT BARN	44001	###	###	###
###	###	###	###	8605					

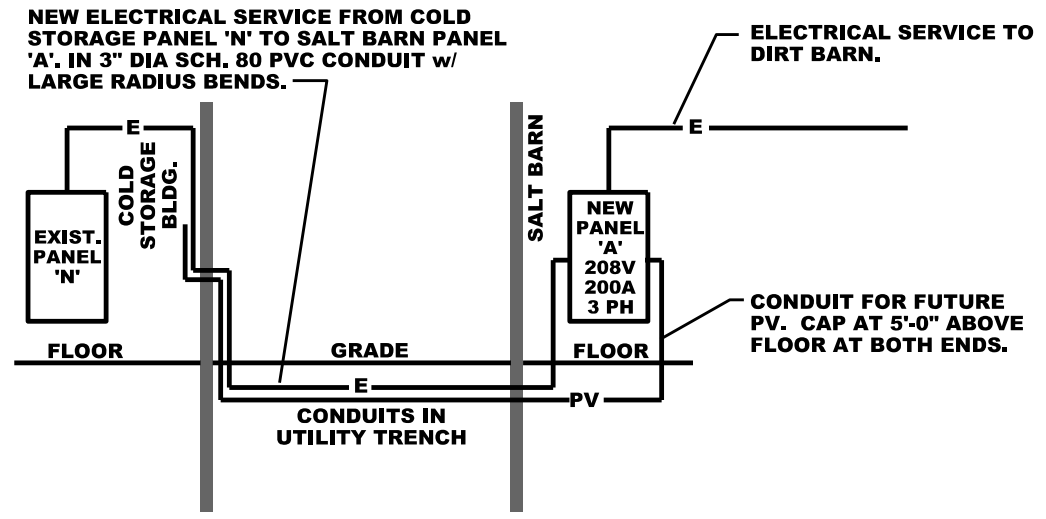
ELECTRICAL INSTALLATION NOTES:

1. THE ELECTRICAL CONTRACTOR SHALL BE RESPONSIBLE FOR REVIEWING ALL PLANS AND SPECIFICATIONS ASSOCIATED WITH THIS CONTRACT PRIOR TO BIDDING THE CONTRACT.
2. THE ELECTRICAL CONTRACTOR SHALL BE RESPONSIBLE FOR PROVIDING ALL PANELS, CONDUITS, AND WIRING AND OTHER RELATED MATERIALS REQUIRED FOR A CODE COMPLIANT INSTALLATION FOR THIS CONTRACT EXCEPT WHERE NOTED AS WORK BY OTHERS.
3. THE ELECTRICAL CONTRACTOR SHALL PROVIDE SUBMITTALS FOR EQUIPMENT AND MATERIALS TO THE OWNER FOR APPROVAL PRIOR TO ORDERING ANY MATERIALS OR EQUIPMENT.
4. THE ELECTRICAL CONTRACTOR SHALL COORDINATE WITH ALL OTHER TRADES PRIOR TO INSTALLING ANY EQUIPMENT.
5. ALL CONDUIT, FITTINGS, PULL BOXES, AND OTHER RELATED MATERIALS SHALL BE SCHEDULE 80 PVC UNLESS OTHERWISE NOTED. ALL BURIED BENDS SHALL BE LARGE RADIUS SWEEPS. NO BURIED PULL BOXES WILL BE PERMITTED.
6. ALL OUTLETS TO BE GFCI w/ WEATHERPROOF COVERS UNLESS OTHERWISE NOTED.
7. ALL CONTROL WIRING SHALL BE IN SEPARATE CONDUIT FROM LINE VOLTAGE.
8. ALL OUTLETS, LIGHTS AND MOTORS IN BASE BID (SALT BARN) AND ALT. BID ITEM #1 (DIRT BARN) SHALL BE POWERED FROM EXTERIOR PANEL 'A'.

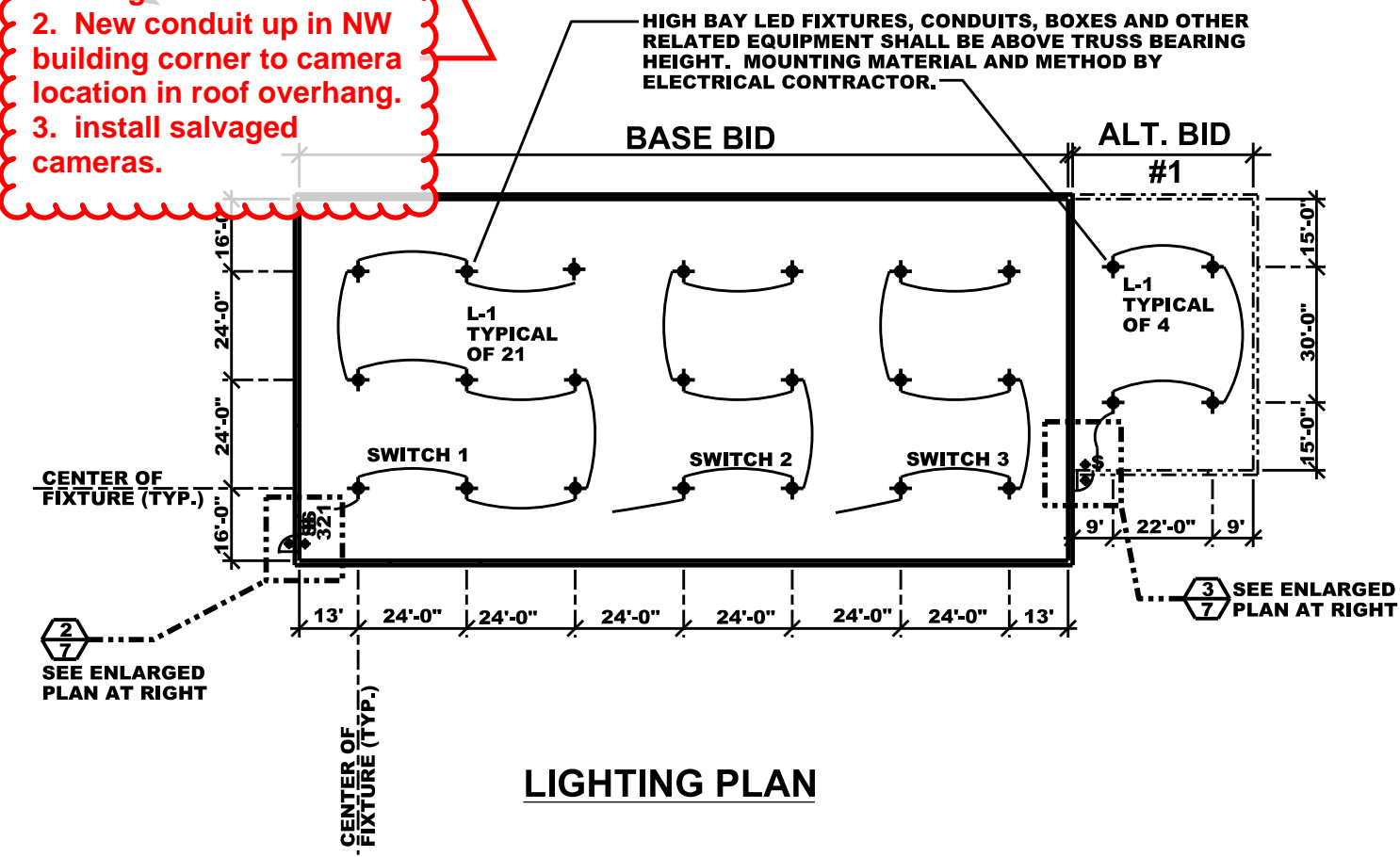


ELECTRICAL PLAN

1. Attach new conduit to existing buried conduit.
2. New conduit up in NW building corner to camera location in roof overhang.
3. install salvaged cameras.



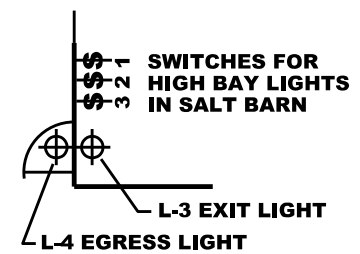
1. ELECTRICAL DISTRIBUTION SCHEMATIC



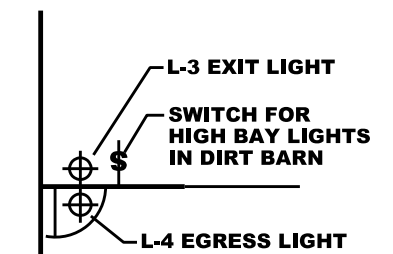
LIGHTING PLAN

LIGHT FIXTURES:

- L-1; ALTECH ELECTRONICS HIGH BAY LED, U-UHBHO-150-50-165-DTG-1-1-H-D(4)-BL; 150W, 5000K, 120/277, TEMPERED GLASS LENS, HOOK MOUNT, BLACK, -30°F; 10 YEAR WARRANTY
- L-2; SEE SHEET EL-100 FOR PHOTOMETRICS, LIGHT SCHEDULE, QUANTITIES AND LOCATIONS.
- L-3; EXIT-EMERGENCY COMBO FOR COLD WEATHER, THE LIGHTING SOURCE, WW12SVX12N-1-R-D-4X-2LA-D-CW4; -40°F; WET LOCATION WALL MOUNTED; INTEGRAL Ni-Cd BATTERY; 120V; RED LETTERING
- L-4; EXTERIOR LED w/ EMERGENCY LIGHT FOR COLD WEATHER, THE LIGHTING SOURCE, BZ-LUX-ACSD-CW; -20°F WALL MOUNTED; INTEGRAL Ni-Cd BATTERY; WET LOCATION; 120/277V; 12W; 5000k; w/ DAY/NIGHT PHOTO SENSOR, -4°F



**2. ENLARGED EXIT LIGHTING
BASE BID**



**3. ENLARGED EXIT LIGHTING
ALT BID ITEM #1**

NAME	COMPANY	EMAIL	PHONE
Jake Silkey	Wheeler Lumber LLC	JSilkey@Wheeler1892.com	262-229-4068
Aaron Burlingame	Direct Management Company	aburlingame@directmanage.com	715-315-4006
Cheyenne Brandt	HM Brandt LLC (Demo)	estimating@hmbrandt.com	262-538-1548
Isaac Siegmann	Bachmann Construction	isiegmann@bachmannconstruction.net	608-358-6668
Garin Jasmer	Tri-North Builders	gjasmr@tri-north.com	608-204-7239